

The background of the cover is a photograph of children in school uniforms playing with a large, colorful parachute in a grassy area with trees. The parachute is held up by several children, and it is decorated with many small, colorful balloons. The scene is bright and festive. The text 'Annual REPORT 2023' is overlaid on the image. The word 'Annual' is in a smaller, white, sans-serif font. 'REPORT' is in a large, bold, white, sans-serif font. '2023' is in a very large, bold, white, sans-serif font. The text is centered horizontally and vertically. There are decorative elements: a white dotted pattern in the top left and bottom right corners, and several large, overlapping circles in shades of blue, red, and orange in the top right corner.

Annual REPORT 2023

Mount Helena Primary School



Table of Contents



Principal Report
School Overview
Students
Our 2023 Team
Positive Behaviour Schools (PBS)
Purpose and Values
Attendance
Academic Achievement
English
Literacy Events
Mathematics
Science
Technologies
Languages - Japanese
History and Social Sciences
Early Childhood Education (ECE)
Health
Physical Education
The Arts - Visual Art
The Arts - Music
Community Relationships
National School Opinion Survey
Year 6 Leadership
Future Directions 2024
2023 Financial Summary

Principal Report

It is with great pleasure that I present to you the Annual Report for the 2023 school year, following consultation and ratification through our School Council.

I would like to sincerely thank and recognise our highly dedicated and committed staff for providing teaching and learning programs that aim to respond to the needs of the 'whole child'. The Annual Report provides us with the opportunity to celebrate our successes and achievements and includes information about our future actions to be taken in 2024 to improve students' achievement and further enhance the school's effectiveness as we remain responsive to our community's needs. Our school community partnership is highly valued.

The school continues to strive for excellence, and through a collaborative process with the staff and community body, work to provide a strong learning culture, with high expectations and clear accountability measures in place.

In collaboration with students, staff and the wider community, 2023 saw Mount Helena Primary School employ the Department of Education's Positive Behaviour Support (PBS) guidelines. Our PBS values of Kind, Respectful, Responsible and Active Learners underpin our student behaviour expectations. This is an exciting journey that positively celebrates all students and creates a positive learning culture and environment. We look forward to continuing this journey into 2024 and beyond.

We sincerely thank the members of our school Parents and Citizen's Association (P&C) and School Council for their robust support and commitment in ensuring we can provide the support required to encourage our children to succeed and providing a high-quality education for the students in our care.

Please enjoy reviewing this report as a summary and reflection of the 2023 school year.

Principal - Claire Slater

School Overview

Our School

Located in the eastern reaches of the Darling Range, within the North Metropolitan Education Region, Mount Helena Primary School is approximately 40 kilometres from the Perth central business district.

The school ethos reflects the values and priorities of the local community, which in turn identifies strongly with their 'local' school. The school educates students from Kindergarten to Year 6. The Kindergarten programme is offered on the school site in our newly built Early Childhood Centre, and at the 'linked' Community Kindergarten, which is located in Chidlow Street.

Mount Helena Primary School is on a large site situated across three levels. It is surrounded by 'the Wooroloo' nature reserve and has an abundance of native and flowering gardens that make Mount Helena Primary School an inviting and welcoming setting. Quendas, also known as Southern Brown Bandicoots, can often be seen at the front of the school.

Our Community

An active School Council and P&C support the school. We also have a long standing association with the Rotary Club of Mundaring, who support with student reading, one day a week.

The School Council composition includes parents, staff and a community member. The School Council: sets the Contributions, Fees and Charges; Reviews school performance data and financial planning; and sets the Dress Code for students.

The P&C Association provides essential funding to meet the school's academic and community objectives including: ribbons and trophies for carnivals; and donation towards the Year 6 Leadership camp, Faction tents for sports carnivals, donations for classroom resources and end of year awards.



Students

At the February 2023 census we had 143 students from Pre-Primary to Year 6, with a balance of 55 female and 88 male students across the school. We had 17 kindergarten students enroll at Mount Helena Primary School.

The majority of our Year 6 graduates go to Eastern Hills SHS for their secondary schooling. Other destination schools historically include: Governor Stirling SHS in Woodbridge, Darling Range Sports College in Forrestfield and St Brigid's College in Lesmurdie.

Our 2023 Team

Principal - Leanne Alderman

Deputy Principal - Megan Howe / Claire Slater (shared roles)

Teaching Staff - Classroom Teachers

Dianna Weckert - Kindergarten

Julie Stewart - Pre-Primary (Monday - Wednesday)

Kelly Spencer - Pre-Primary (Thursday - Friday)

Jessica Chitty - Year 1/2

Scott Bielby - Year 2/3

Allysen Noble - Year 4/5

Alecia Snart - Year 4/5 (Monday - Thursday)

Katri Jackson - Year 4/5 (Friday)

Claire Slater - Year 6 (Monday - Wednesday)

Louise Burke - Year 6 (Thursday - Friday)



Teaching Staff - Specialist Teachers

Kyoko Morita - Japanese

Susan Pinakis - Music (Term 4)

Sharna Hepworth - Music (Term 3)

Elizabeth Gilead - Visual Art

Kerry Gow - Physical Education

Nerida Watson - Science

Community Kindy

Teacher - Sally Dowinton (Term 1)

Penny Scalise (Term 1 - Term 3)

Monique Ball (Term 4)

Community Kindy A.P. - Anthea Poole



Our 2023 Team

Support Staff

Manager of Corporate Services - Nicole McDonald (Term 1-2) Ana Johnson (Term 3-4)

Corporate Services Officer - Ana Johnson (Term 1-2) Gwenda Young (Term 3 - 4)

Allied Professionals

Kate Bourgault
Haley Clothier
Elizabeth Colley
Karen Goddard
Amy Harris
Cat Studd

Chaplain

Chloe Hockley

School Psychologist

Rebecca Bowers

Library Officer

Liza Tunnell

Gardener

Bill Goddard

Cleaner in Charge

Lorelle Parnell

Cleaners

Carol Hamilton
Kay Barfiled
Manuela De Asis



Workforce Composition

As is evident in our staff summary, approximately half of the staff work part time at Mount Helena Primary School, with 56% of Teaching staff working full time, 64% of Non-Teaching staff. This allows for tandem teaching arrangements to be made within the classroom with students working within environments that have consistency, ensuring they feel safe, secure and supported across the school.

We are fortunate to offer a range of Specialist Teacher positions including Music, Visual Arts, Japanese, Physical Education, and Science.

	No	FTE	AB'L
Administration Staff			
Principals	1	1.0	0
Associate / Deputy / Vice Principals	2	1.0	0
Total Administration Staff	3	2.0	0
Teaching Staff			
Other Teaching Staff	14	7.9	0
Total Teaching Staff	14	7.9	0
Allied Professionals			
Clerical / Administrative	2	1.2	0
Gardening / Maintenance	1	1.0	0
Other Allied Professionals	8	5.0	0
Total Allied Professionals	11	7.1	0
Total	28	17.0	0

Positive Behaviour Support

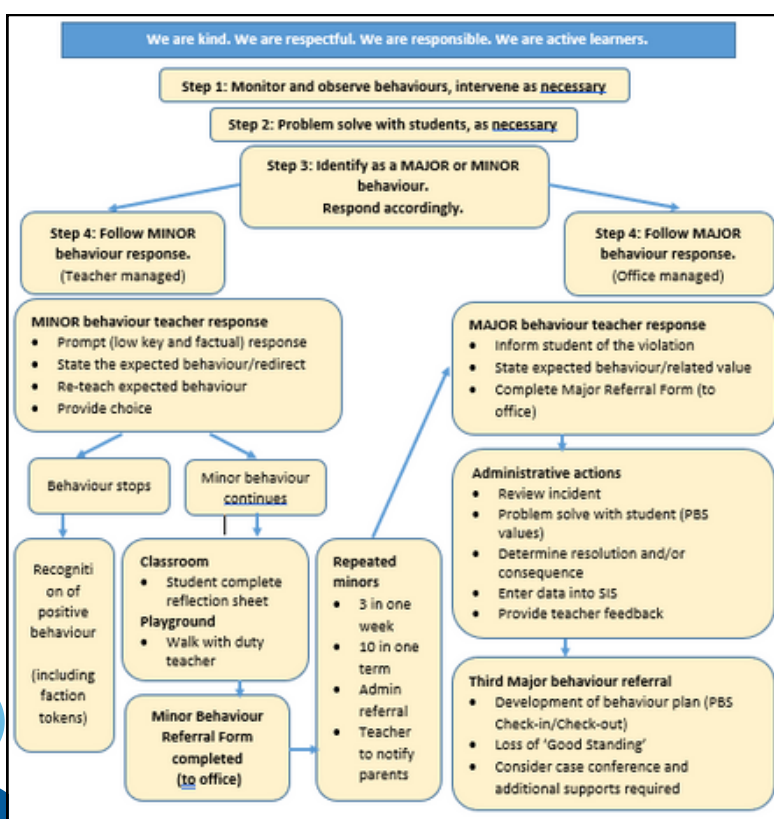
After completing initial training at the end of 2022, Mount Helena Primary School launched their Positive Behaviours Support (PBS) journey in 2023. PBS is a framework that is a research-based process that is proven to create safer and more effective schools. It is a prevention model, based on the premise that all students can benefit from well-implemented evidence-based practices for improving student behaviour, increasing academic performance, improving safety, decreasing problem behaviour, and establishing a positive school culture.

The PBS process began with whole of staff training and the formulation of a PBS Committee. Through extensive community, staff and student consultation we developed our four core values; kind, respectful, responsible and active learners. The PBS team lead a consultative process involving whole of staff where the PBS Behaviour Expectation Matrix was defined.

These behaviour expectations provide students with direction and guidance to engage in positive behaviours throughout the day in all environments and with each other and the staff. To support students with meeting the expected positive behaviours faction tokens were awarded and tallied as students worked towards Tier Targets collectively with their Faction.

During Semester 2, students worked towards and achieved two levels of Tier Targets;

- Tier Target 1: Enjoy an icy-pole, play in different play spaces and wear your faction shirt
- Tier Target 2: Arts and Technologies afternoon



As a part of the process of refining the school behaviour management referral processes to align with PBS methodology. This included refinement of Minor and Major referral forms, Staying on Track documents and improved behaviour plans with set goals through the PBS Check-in/Check-out.

Purpose and Values

Our PBS Mission Statement

At Mount Helena Primary School, we work collaboratively with parents and the wider community to provide a respectful, nurturing and supportive environment for our students. We collectively model expected behaviours thus strengthening our teacher-student relationships. We aspire for personal excellence and provide opportunities for students to grow and engage academically, socially and emotionally.

Core Values

Mount Helena Primary School Positive Behaviour Support (PBS) is guided by four core values;

- We are Respectful: We all have the right to feel safe and respected by others.
- We are Responsible: Relationships are based on trust, mutual respect and the acceptance of responsibility.
- We are Kind: Recognition of the differing needs and rights of individuals, through the promotion of an environment which is inclusive.
- We are Active Learners: A positive approach based on the belief that all students have the capacity to learn and deserve opportunities to experience success.

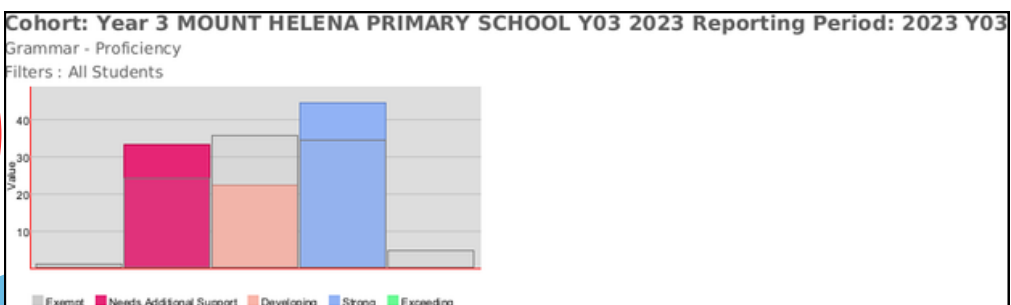
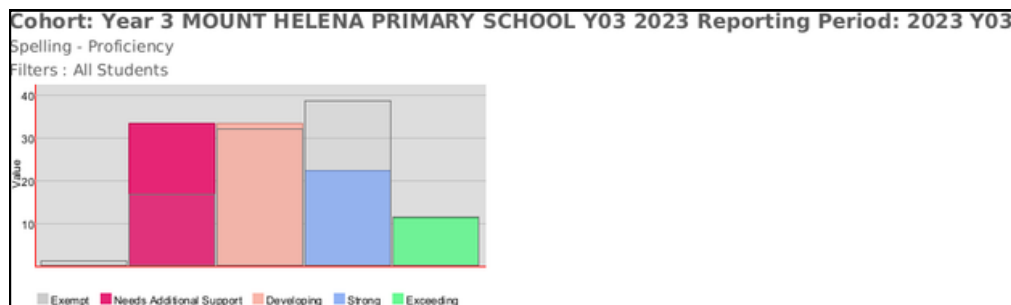
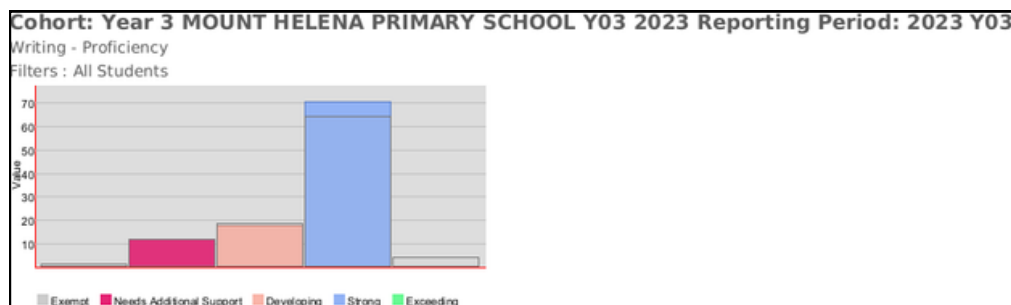
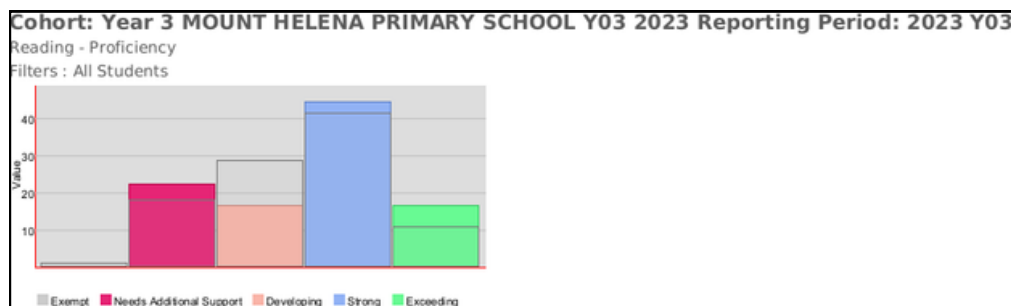
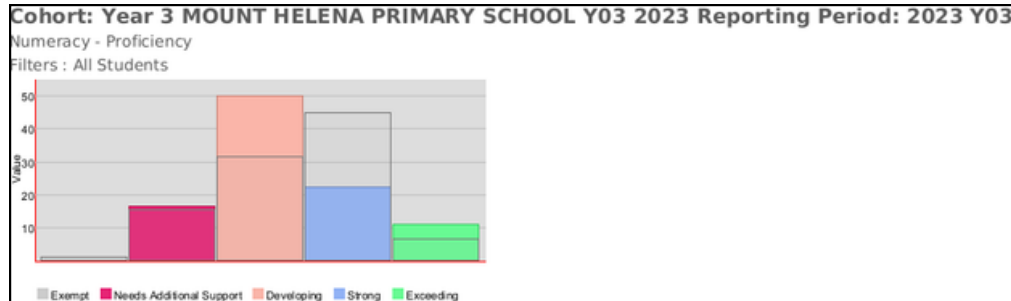
Our Focus

Our focus with WA Positive Behaviour Support (WA PBS) is a key component of creating classrooms with high academic engagement through an integrated approach to behaviour, learning and teaching. We acknowledge that student behaviour impacts the teaching and learning process, curriculum delivery (including pedagogy), the physical environment and ultimately student outcomes. We also acknowledge the influence of the home, social situation, cultural backgrounds, class, whole school community and wider community. The purpose of embedding school-wide PBS is to establish a climate in which expected behaviour is the standard.



Academic Achievement

NAPLAN - Year 3



Recommendations:

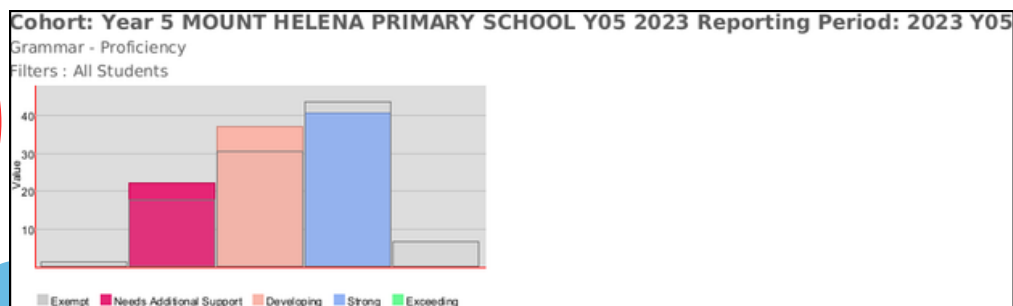
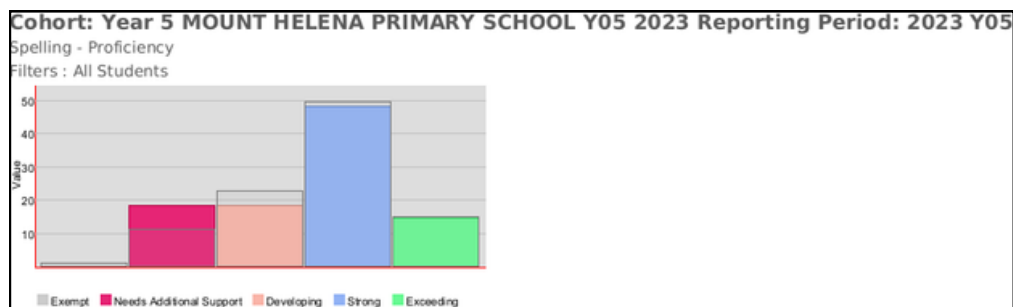
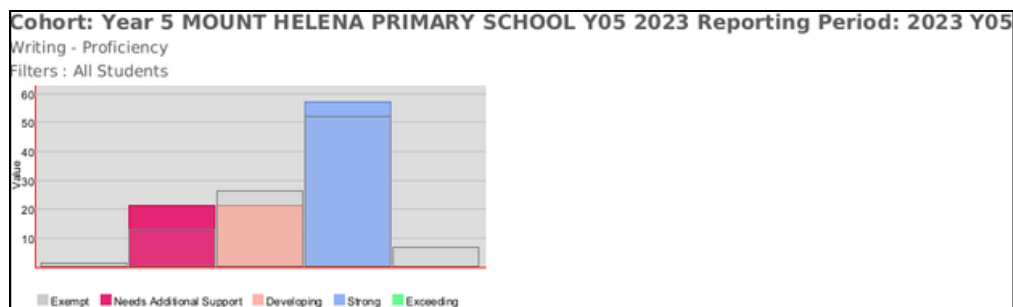
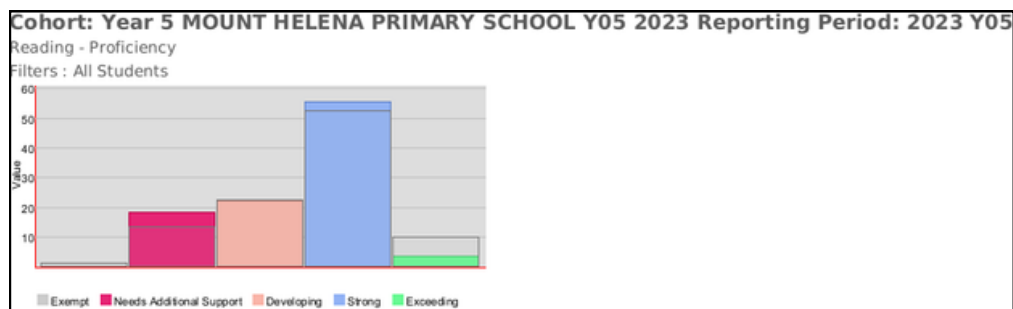
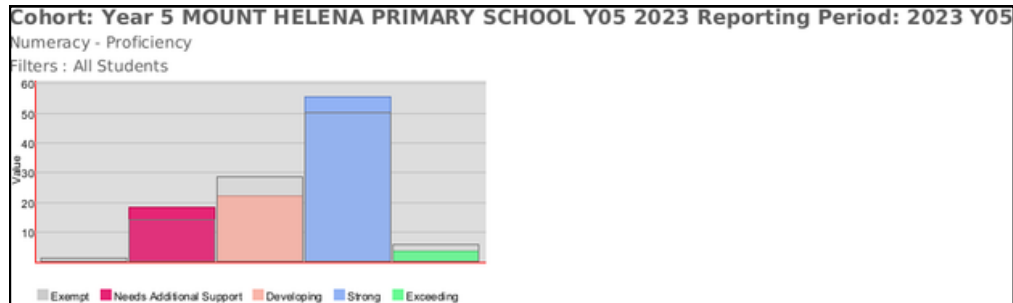
The grey rectangle indicates like-school comparison.

The relative strength in Year 3 was Reading and Writing. This reflects our priority of Reading Instruction in the early grades, and consistency in our approach to intervention and literacy instruction.

Best practice, evidence-based Numeracy programs and practices will continue to be explored throughout 2024. Explicit instruction and lesson structure will be a focus throughout Mathematics to ensure consistency in whole-school instruction and processes.

Academic Achievement

NAPLAN - Year 5



Recommendations:

The grey rectangle indicates like-school comparison.

Throughout all curriculum areas we have a cohort of students who attained a proficiency level of strong. The relative strength in Year 5 was in Spelling.

For 2025, the focus is to continue embedding whole of school instruction and practices in Reading, Writing and Numeracy.

This includes providing staff with the support, mentoring and development to ensure successful implementation.

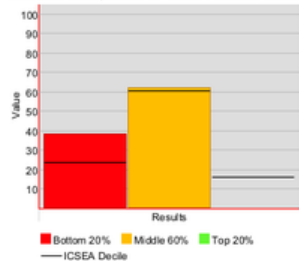
Academic Achievement

On-Entry

Cohort: MOUNT HELENA PRIMARY SCHOOL 20241 (2024) Reporting Period: Semester 1, 2024

On-Entry - Numeracy

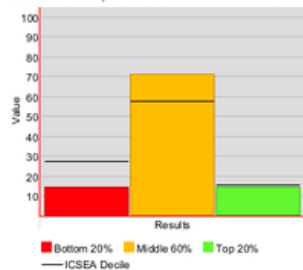
Results compared to ICSEA Decile including data from other schools



Cohort: MOUNT HELENA PRIMARY SCHOOL 20241 (2024) Reporting Period: Semester 1, 2024

On-Entry - Reading

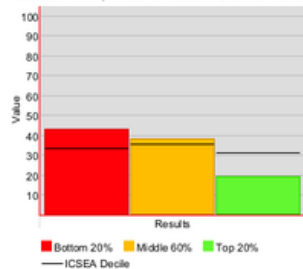
Results compared to ICSEA Decile including data from other schools



Cohort: MOUNT HELENA PRIMARY SCHOOL 20241 (2024) Reporting Period: Semester 1, 2024

On-Entry - Writing

Results compared to ICSEA Decile including data from other schools



Recommendations:

The black dotted line is the ICSEA Decile including data from other schools. These graphs show our comparison to like schools.

In Reading, these results indicate less of our Pre-primary cohort in the bottom 20% of students, with an equal amount in the top 20%.

Writing results clarify our decision to move to Talk for Writing for student instruction.

Numeracy results indicate more focus on including Numeracy games and activities into everyday play to support with early Numeracy skill acquisition.



English

2023 Overview

Throughout 2023 one of the key focus points for the English committee was the promotion of reading and writing throughout the school by engaging in school-wide celebrations of literacy. We actively partake in The Children's Book Council of Australia Book Week and the Australian Library and Information Association National Simultaneous Storytime. Each of these events involve school-wide activities and engagement to highlight the importance of reading and ignite a love for reading amongst our school community.

In 2023, we continued with the Curtin University Speech program which focuses on providing intervention within the early years. As part of this program, Mount Helena Primary School had a senior Speech Therapist attached to the school who oversaw 6 preservice university students working within classrooms; supporting students and staff. The program mainly focusses on oral manipulation and narrative retell, which is in alignment with Letters and Sounds, therefore complementing the classroom teaching and learning. Additionally, the preservice students provided professional learning for teachers to provide a deeper understanding of language development in the early years.

Talk for Writing

Over the course of 2023, Talk for Writing was trialled in the Kindergarten and Year 1/2 classes. Classroom teachers attended a two-day workshop, delivered by the Dyslexia Speld Foundation, and began implementation into their classrooms with the view to provide feedback about the appropriateness of the programme for our school. Talk for Writing develops a students writing skills through expanding students' oral language skills and then teaching the necessary steps for sentence, paragraph and text construction. As a result of this trial, school-wide implementation of Talk for Writing will commence at the beginning of 2024.

Paired Fluency

In Term 4, 2023, staff began the implementation of paired fluency. This initiative is designed to form an element of our structured literacy block as we progress towards the Science of Reading theory. Paired fluency enables students to engage in the practice of Repeated Reading, an effective, evidence-based approach to fluency instruction. Staff engaged in a Professional Development session which addressed the question of 'why paired fluency?' and 'what does paired fluency look like?'. The Professional Development session was followed up with an Instructional Guide and PowerPoint to further support staff in the delivery of this initiative.



Literacy Events

Fremantle Literacy Centre

As a part of promoting and nurturing literacy learning for our students, the Fremantle Literature Centre visited Mount Helena Primary School. Students from Pre-Primary to Year 6 were exposed to original artwork exhibitions and engaged in literature experiences presented in an inspiring way. The Fremantle Literature Centre provided our students with engaging learning experiences, and inspired them to write reviews and stories of their own. This provided another opportunity to develop an interest in literature for our students.

National Simultaneous Story Time

The picture book for 2023 was 'The Speedy Sloth'. This year, students from Kindy to Year 6 gathered together for a reading of the story, with our very own sloth. Students then worked to complete a question and answer scavenger hunt about the book and participated in a race against the sloth. This experience provided students with an interactive way to explore and understand literature.

Public Speaking Competition

We were once again fortunate to be able to host our school-based Public Speaking competition in Term 2, 2023. Students in Year 3-6 presented speeches included topics that sparked their interest and were important to them.

Congratulations to our Senior Champion Savannah Campbell for her speech on 'Trying New Things' and to our Junior Champion, Baylee Taylor, with her poem, 'Snowball'. Both of these students then went on to represent our school at the HEC Public Speaking Competition at Gidgegannup Primary School.

Spelling Bee

During Term 1, students from Year 1-6 were provided with the opportunity to participate in our school-based Spelling Bee. Students were given the opportunity to challenge themselves in either the Junior (Year 1-3) or Senior (Year 4-6) Competition. Congratulations to Jordyn Gresham as our Junior Runner-Up and to Cain Lowther who was our Junior Champion. For our Senior Competition, congratulations to Savannah Campbell as our Runner-Up and to Charlotte Burden as our Champion. All four students represented our school at Mundaring Primary School and can be proud of the courage they demonstrated.

Book Week Assembly

Each year across Australia, the Children's Book Council of Australia (CBCA) brings children and books together celebrating CBCA Book Week. During this time, schools, libraries, booksellers, authors, illustrators and children celebrate Australian children's literature and you will often see children's book character parades and talented librarians creating amazing displays. In 2023, students participated in Book Week and celebrated their favourite book or character by dressing up in costume. All students were provided the option to participate in a whole-school parade and show off their amazing costumes. The theme for CBCA Book Week 2023 was 'Read, Inspire, Grow.'



English Recommendations

Reading

To further improve the student achievement in Reading, Mount Helena Primary School teaching staff will;

- Review current reading practices with an emphasis on the implementation of Science of Reading approach;
- Review Home Reading resources, ensuring that our resources align with synthetic phonics;
- Continue to encourage reading within the home, using 'how to' tutorial videos;
- Place an emphasis on 'Reading for Enjoyment' where teachers read aloud to the class as opposed to Silent Reading; and
- Establish Australian Reading Spine resource within the school for teachers to access exemplary text based on year levels.

Spelling

Based on student achievement and progress in Spelling, Mount Helena Primary School staff will;

- Review the current spelling program for Year 3-6, with an emphasis on intervention for students at educational risk;
- Provide training and mentoring for Early Childhood Education (ECE) teachers to ensure that the Letters and Sounds program is delivered with fidelity;
- Continue implementation of Heggerty, including lesson demonstrations and teaching for impact; and
- Implement daily reviews with a specific focus on reviewing phone grapheme correspondence and word morphology, etymology and syntax.

Writing:

Based on student achievement and progress in Writing, Mount Helena Primary School staff will;

- Implementation of Talk for Writing across all years levels K-6, including the provision of Professional Learning and mentoring.
- Gain an understanding of students opinion towards writing through conducting surveys.
- Increase typing skills, providing opportunity for students type with efficiency and speed to ensure that this is not hindering student performance.
- Implement 'Writing Sprints', providing specific focus and practice of skills.
- Focus case management plans based on improving Writing skills.



Mathematics

The focus for the curriculum area of Mathematics was to improve the capacity of teachers and provide a consistent and clear understanding of a Numeracy Block.

Our Mathematics Curriculum Guide was updated at the end of 2022, with changes being made to the Numeracy Block. The focus was on explicit teaching of concepts including, "I do, We do, You do". Early in 2023, "Maths Warm Ups" were introduced as a new addition to our Numeracy Block. These warm-ups are designed to improve mental math computation, revise skills and expand student capabilities with worded problems. Maths Warmup PowerPoints were created and shared as a guide for suggestions for easy implementation across year levels.

To continue building the use of hands-on, fun activities for students, Professional Learning for teachers was held at the beginning of 2023 for teachers from Year 2 upwards with Mrs Richards (Numero consultant). Mrs Richards also provided an incursion for students from Year 2 to Year 6 in Term 1, 2023. Buddy classes before school with the Year 5s was introduced in Term 3 of 2023 with the Year 1/2 class to consolidate their understanding of the game. The Year 4/5 classes continue to hold a "Numero and Maths Games Afternoon" once a week where the rules are retaught, and the students have an opportunity to play and engage in Numero and hands-on Mathematics games. This has seen an improvement in student engagement and increased mental math skills at a classroom level.

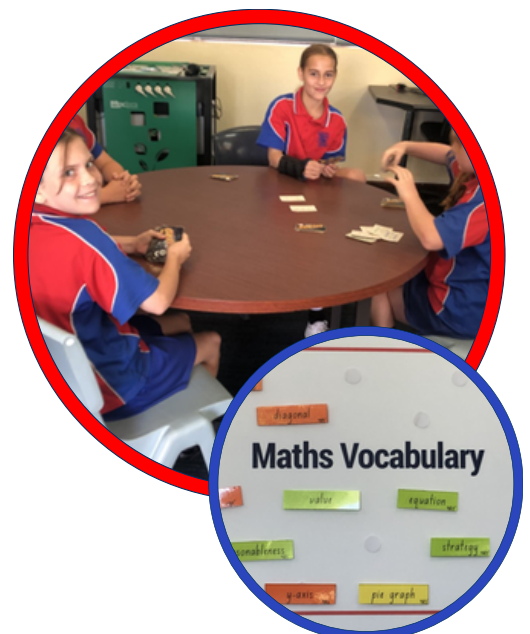
In addressing the understanding of mathematics terminology, mathematics "posters" with common language and year relevant vocabulary were refined and expanded on since their introduction in late 2022, being sorted and displayed according to Mathematics strands and concepts.

Children are taught mathematics concepts in a variety of ways including using manipulatives and a hands-on approach. To facilitate this, all classrooms were provided with a box of essential items which include dice, counters, place value cards, money etc as part of their resources.

Suggestions for continued growth

To further improve the student achievement in Mathematics Mount Helena Primary School teaching staff will;

- Review the delivery of explicit mathematics in classrooms to ensure a consistent, explicit approach is in place;
- Support teachers with the delivery of Mental Maths warmups, with a focus on number problems;
- Increase opportunities to utilise money concepts through daily classroom practices; and
- Investigate evidence-based best practice numeracy programs to support the explicit teaching of mathematical concepts.



Science

2023 was a continuation of the specialist Science program at Mount Helena Primary School. Throughout 2023, Ms Watson took on the specialist role, teaching Science to students from Pre-primary to Year 6 in our purpose built Science laboratory, promoting hands-on practical application, underpinned by Primary Connections. This program utilises an inquiry-based teaching and learning model and is underpinned by the 5E's; Engage, Explore, Explain, Elaborate and Evaluate. Students use their prior knowledge to develop explanations during their hands-on learning experiences,. Students are then provided with opportunities to represent their understanding through multiple modes including iPads, robotics and 3D models. Ms Watson was successful in her application for the Woolworths Landcare Grant which will continue to build the Science garden and sustainability program.

Science Week Celebrations

As part of National Science Week, all students from Kindy to Year 6 participated in a fantastic incursion by Scitech. Scitech visited Mount Helena Primary School with their Space Dome. The experience for students was engaging, with hands-on activities that linked to Ms Watson's classroom program of Earth and Space Sciences. Students learnt all about the planets and beyond as they stepped into Scitech's Space Dome which was transported to our school site. This was a great opportunity to inspire students to love the magic that is science.



Hills Education Community Science Quest

We were fortunate to once again participate in the Hills Education Community Science Quest hosted which was hosted by Darlington Primary School in 2023. Our students, accompanied by Ms Watson, worked collaboratively on this challenge and represented our school with pride. A huge congratulations are extended to our Year 6 Science Team of Ashley, Zaine, Zachary, Alison and Jasmine who were placed up against the 11 other primary schools within our network. Our students represented out school with pride.

Children's Groundwater Festival

This year we were successful in our application to participate in the Children's Groundwater Festival. This excursion is for Year 4-6 students from all over Western Australia. Mount Helena Primary School students were part of 1200 students who came together at Whiteman Park to participate in learning experiences around life issues of groundwater, sustainability and environmental concerns. Students were thoroughly engaged throughout the time and came away with valuable learning and understandings.



Technologies

2023 saw technologies fully implemented through an integrative approach to learning for our students. With an extensive library of tools, students from Pre-Primary through to Year 6 were able to use technology to enhance their learning and understanding of concepts in an engaging manner.

Students utilised robots such as Bee Bots and Dash and Dot to explore and develop their problem solving skills using early coding skills. Students continued to develop their computer programming skills through exploration of coding platforms, such as Scratch and Code.org. Students engaged their technological creativity using Makey Makey invention kits. A kit that is designed to connect everyday objects to computer keys. Exploration into these computer programming experiences links to having strong skills in computer language, math, science and logic, students are provided with the opportunity to extend their knowledge and understanding around the use of desktop computers and iPads. Students continue to build their skills through working collaboratively with their peers.

Students are provided with exposure to iPads and computers as a way to consolidate their learning, through Mathletics and Reading Eggs, linking back to learning in engaging ways. Additionally, students are given the opportunity to practice their skills through creating word documents, creating graphs through Excel, and developing PowerPoints. Students in Year 5 and 6 also practised their ICT skills using online platforms such as Canva, to create posters and to present their work in visually stimulating ways.

Languages - Japanese

Our Japanese specialist teacher, Miss Morita (Morita Sensei), having grown up in Japan, continued to provide a dynamic and engaging Japanese program throughout 2023. Students were engaged in a variety of speaking, listening and reading activities, to develop their skills and understanding.

Morita Sensei provides students with a dynamic cultural program and students earn the right to be a 'mini sensei' with the opportunity to wear traditional dress during the lesson. Morita Sensei has a positive classroom reward program where students earn 'yen' and are able to spend this money at the end of each program.

Morita Sensei inspires students and immerses them in a vast range of cultural experiences. The Japanese program is held in high regard by the students who actively engage in the program.

On several occasions throughout 2023, Morita Sensei organised for visiting exchange students, who were engaged in a program at Eastern Hills Senior High School, to participate in our students lessons for the day. Students thoroughly enjoyed being immersed in learning about culture throughout these lessons.

History and Social Sciences

History and Social Sciences (HaSS) is taught by each classroom teacher, and integrated further into additional curriculum areas through reading and writing experiences.

In 2023, our HaSS Operational planning was led by Mr Bielby. Mr Bielby worked with the committee to commit to improving the teaching and learning for our students, and to build the profile of Aboriginal and Torres Strait Islander Histories and Cultures throughout the school. Mr Bielby leads the Reconciliation Action Plan, which is incorporated into our HaSS Operational Plan. In doing this we ensure that resources are planned and budgeted for.

Culturally Responsive

In an effort towards being a culturally responsive school, we use the Aboriginal Cultural Standards Frameworks to build and maintain a strong ethos on respecting and valuing diversity. As part of our continual growth, as a school we reflect against the frameworks to provide an understanding of where we are at and our goals moving forward.

In 2023, as a part of our Carnaby Wing (Early Childhood area) upgrade, we specifically designed the entrance to incorporate indigenous culture. This includes the Wing (ECE area) which connects our school to Aboriginal culture. This area is a great welcoming space for our school, and engages us with the local area and the land.

Kings Park Excursion for Pre Primary to Year 3 students

At the end of Term 3, our Pre-Primary to Year 3 students participated in the Rio Tinto Naturescape excursion at Kings Park. Students were immersed in activities where Aboriginal presenters shared their knowledge of the six Noongar seasons and traditional life. Students participated in cultural activities traditionally associated with the seasons, such as plant uses for food and medicine, hunting, language, art, dance, and traditional games. The Djilba/Kambarang seasons was the focus with bush tucker, medicine and the Wildflower season the focal points. This excursion was a great way to link Science, Humanities and Social Sciences and Aboriginal and Torres Strait Islander History and Culture. Students had a wonderful time learning through activities in the open natural space.



Early Childhood Education

During 2023, Mount Helena Primary School provided both an on-site Kindergarten and an affiliated Community Kindy (Eastern Hills Community Kindy). Both programs offered a 5 day fortnight program with a focus on play based learning. Making use of a natural environment coupled with a well resourced indoor environment, learning experiences are authentic and engage the inherent inquisitiveness of the children.

Early Childhood Playground Refurbishment

2023 saw the completion of our our Early Childhood Playground refurbishment. Many garden beds were added, with seating and multi-use play equipment included. A winding bike track with parking for bikes and scooters was built. A new mud kitchen, waterwall, cubby, car and boat were also added as fixed features within the area. Dramatic play items have been included to encourage roleplay and small world play in the outdoors.

Pre-kindy Orientation and Pre-kindy Cafe

Our Pre-kindy Orientation Program, Pre-Kindy Cafe, began in Term 3, and welcomed all new enrolments to the school for Kindy 2024. For one and a half hours each fortnight, children and their parents/caregivers are invited to enjoy a story, activities and morning tea. They can meet the teacher, socialise with each other and become familiar with the Kindy classroom and routine. These positive experiences are designed to alleviate any anxiety around beginning Kindy the following year for both parents and children and are very well received by the community.

Education By Nature Excursion

Excursion to Eastern Hills Community Kindergarten and Playgroup to participate in 2 sessions facilitated by Educated by Nature. Children enjoyed building teepees, making potions and creating small worlds at the Imagination Village incursion. During Muddy Gully, children were invited to slip and slide on mud, create clay bowls and face paint with ochre muds. A great time was had by all!



Health

Throughout 2023, Health was taught by our classroom teachers. As a part of the health program, each teacher includes at least 20 hours of Protective Behaviours lessons, combined with Challenges and Choices. The combination of these two resources ensures students are provided with the opportunity to learn how to enhance their health, safety and wellbeing and to contribute to building healthy, safe and active communities. Through exploration of relationships, emotions and safety students are provided with opportunities to develop skills to positively influence, their own and others' health and wellbeing.

Growing and Developing Healthy Relationships Grant (GHDR)

Mrs Slater, in working with the Year 6 students, was successful in her application for the Relationships and Sexuality Education programs grant from GDHR. This was used to buy resources to support students with a better understanding of their growing and developing bodies, including mental health related concepts.

First Aid Incursion

During Term 1, all students, Kindy to Year 6, participated in a free incursion presented by St John's Ambulance. The incursion was to provide students with learning and an understanding basic first aid skills. Students from each year were engaged in fun, age-appropriate sessions. A basic outline for each year was as follows:

Kindy and Pre-Primary: Through a storybook and with the aid of Kura the Bear, student were able to recognise how to identify an emergency, what number to call and understand the role of who can help in an emergency.

Years 1 & 2: Students learnt how to recognise a Danger, how to get someone to Respond accordingly and when to send for help in an emergency. By the end of the session, students were able to understand what an emergency is and how to recognise an ambulance and a paramedic.

Years 3 - 6: Students were provided opportunities to identify, practise and develop the student's skills. The focus for the students was to assess a casualties' condition, check their airways and breathing, and how to place the casualty into the recovery position. The demonstrations were all about reinforcing the message of staying safe and seeking help quickly in an emergency.



Physical Education

We were fortunate again in 2023 to be able to host a range of sporting events throughout the year, which allowed our students to demonstrate their skills and sportsmanship. Our Physical Education program was spearheaded by Mrs Gow. Mrs Gow is an avid sportsman and is involved in numerous community sporting entities. Her goal is to encourage all students to move their bodies through movement and encourage all physical activities include dance, team sports and individual skills development.

In addition to the Physical Education program, we provide students with the opportunity to enjoy movement and increase physical activities through;

- Morning Movement - each day, all classes, are provided with the opportunity to engage in an activity that promotes movement and encourages participation.
- Cricket Club - during Term 3 and 4, on a Thursday morning, Mr Bielby provided students will the opportunity to engage in a fun cricket skills session.

Semester 1

We held our Faction Swimming Carnival for our Year 4 - 6 students at the Mount Helena Aquatic Centre and a Water Tabloids event for our Year P - 3 students back on school site.

Term 2 saw the organisation of the Winter Lightning Carnival which included football, basketball, netball and indoor hockey. Students from Year 4 - 6 participated in this event.

Our final event for Semester 1 included the Faction Cross Country carnival with all students from Pre Primary to Year 6 being provided to opportunity to complete this event on school grounds with distances ranging from 500m -1500m.

Mrs Gow also organised several Football clinics run by the Western Australian Football Commission. Our students thoroughly enjoyed these clinics and the opportunity to practice footy specific skills with a talented and professional football player.

Semester 2

The Hills Education Community Interschool Cross Country Carnival was hosted by Parkerville Primary School in 2023 and took place on their school grounds, with six schools among the hills competing. Our students participated with great effort and pride and demonstrated outstanding sportsmanship. Our Year 5 boys performed particularly well.

Our school dance program this year was lead by our Physical Education Teacher, Mrs Gow. Students worked on a routine choreographed by Mrs Gow, resulting in a whole school dance presentation taking place at the Music Auditorium at Eastern Hills Senior High School.

The Athletics Faction Carnival took place at the end of Term3 with the Interschool Athletics Carnival taking place at Mundaring Recreation Ground in Term 4. Thank you to Mrs Gow for her tremendous work to coordinate the athletics carnivals.

The Arts - Visual Arts

Mount Helena Primary School is very fortunate to have a very talented Visual Art Teacher; Ms Gilead. Ms Gilead encourages our students to realise their artistic potential through various arts mediums including clay, painting, pencils, pastels and a combination of mixed mediums. Ms Gilead inspires our students to use art as a form of expression and to create artworks that displayed their own personal style and creativity.

Each year we participate in the annual Hills Education Community Arts Festival where we display two pieces of visual art from each year level, along with the other nine primary schools. This event takes place in Term 2 each year and is very popular within the hills area.

Ms Gilead also encourages every child to create unique artworks to be displayed at the Mundaring Environmental Art Awards. The theme for 2023 was "Helping Hands". Of the 1175 entrants, we had nine students selected as overall winners and one student received recognition as 'highly commended'. Each of these winners has their art works produced on a banner which is then publicly displayed in the Mundaring shopping precinct in December each year. The banners remain on display until the following year's competition. One of our students also had their artwork selected to be transformed into "Thank you" cards for the City of Swan.

Ms Gilead's passion and love of art can be seen through the students engagement in class and through the displays in the classroom and up around the school.

Additionally, as a part of NAIDOC Week celebrations, Ms Gilead supported our students with the creation of Indigenous themed kites. Students were able to create unique artworks and were then provided with the opportunity to celebrate their work through flying their kites. It was a a lovely celebration of art and culture.



The Arts - Music

Whilst we ran the process of appointing a Music Specialist teacher, we were fortunate to employ Mrs Sharnae Hepworth to work with our Year 4 - 6 students, and Mrs Julie Stewart to work with our Kindy to Year 3 students. During this time, Mrs Hepworth supported the students to explore their musical creativity through the creation of digital music compositions using Garage Band. Mrs Stewart enabled our younger students to explore musical tone and pitch and how they can move their bodies to a beat.

In Term 4, we were privileged to welcome Mrs Susan Pinakis to our school as the newly appointed Music Specialist Teacher. Mrs Pinikas brings with her a wealth of musical talent and skill. During Term 4, Mrs Pinakis worked with our Year 4 - 6 students, whilst Mrs Stewart continued working with our Kindy to Year 3 students. In the very short time of 8 weeks, Mrs Pinakis worked with a newly developed choir and performed at our end of year awards presentation assembly. Mrs Pinikas and Mrs Stewart provided our students with opportunities to learn and understand music as a means for enjoyment through singing and playing a variety of instruments. Students are given the scope to explore their creativity and to develop their own compositions as they progress through to the older year levels.

Our students are provided with the opportunity to participate in the Instrumental Music School Services program. In 2023, we had students from Year 5 and 6 receive tuition through this program in clarinet and percussion instruments. The students have weekly tuition and are then provided with the opportunity to be part of the ESHS Junior Band and perform in concerts throughout the year. The student's success is attributed to their own dedication to rehearsal and to the talented music teachers who support them.

Music Incursion – Kaboom Percussion

During Term 4 of 2023, our Kindy to Year 6 students were inspired by a fantastic musical performance by Kaboom Percussion.

Throughout the performance, Kaboom demonstrated the multiple aspects of the science of sound production in fun and engaging ways. The students were at the heart of this interactive experience, where they explored body percussion to create rhythms and grooves. It showed students how they can recycle and reuse everyday items to craft their own unique musical creations.

Music is a gift and we love that the students were able to experience such an amazing and inspirational performance. Thank you to our community for its support of this incursion.



Community Relationships

Harmony Day Community Breakfast

As a part of our school Harmony Week we celebrate our community through hosting our annual Community Breakfast. This event is to give back to our community. Parents/caregivers attend school with their child, enjoy a free sausage sizzle and then join in for some inclusive games and activities. Our students, and the wider community, thoroughly enjoyed this event, participating in activities such as; cubby making, parachutes, lawn games, tennis, dancing, obstacle courses and board games.

Body Kind Picnic and Great Vege Crunch

To celebrate and promote the importance of keeping our bodies healthy and to end Term 3, parents/caregivers were invited along to join their children in an afternoon of movement followed by a healthy picnic. The picnic was a collection of vegetables purchased with the 'Great Vege Crunch' grant we were successful in receiving.

WHIM Festival

To showcase the quality work of our teachers and students, Mount Helena Primary School participated in the WHIM Festival (Mount Helena's local biannual festival). We presented work from all classrooms, including specialist areas, and represented our school throughout the day providing an insight into how the school is progressing to support the needs of the community.

Marathon Club

Each Friday Morning, weather permitting, Mrs Slater provided students with the opportunity to walk or run laps around the oval, working towards earning certificates and Marathon medallions



National School Opinion Survey

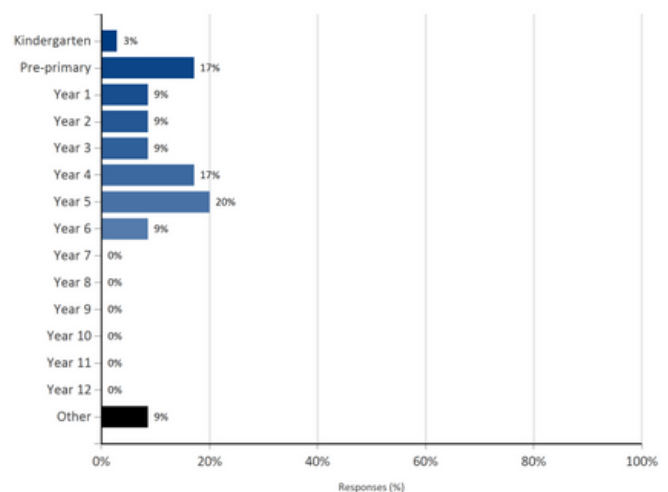
The National Schools Opinion Survey is designed to collect opinions from key stakeholders in the school community. In 2023, Mount Helena Primary School asked parents to provide their thoughts the school. The school uses this data to inform planning and future directions. At Mount Helena Primary School we value the opinions of all stakeholder.

All parents were provided with the opportunity to take part in the survey in 2023. 35 parents (out of 115 families) responded to the survey and provided valuable information back to the school. To capture a fair and equitable spread of parent feedback, there needs to be a targeted approach to getting a wider, inclusive spread of parent feedback, especially within in the early years.

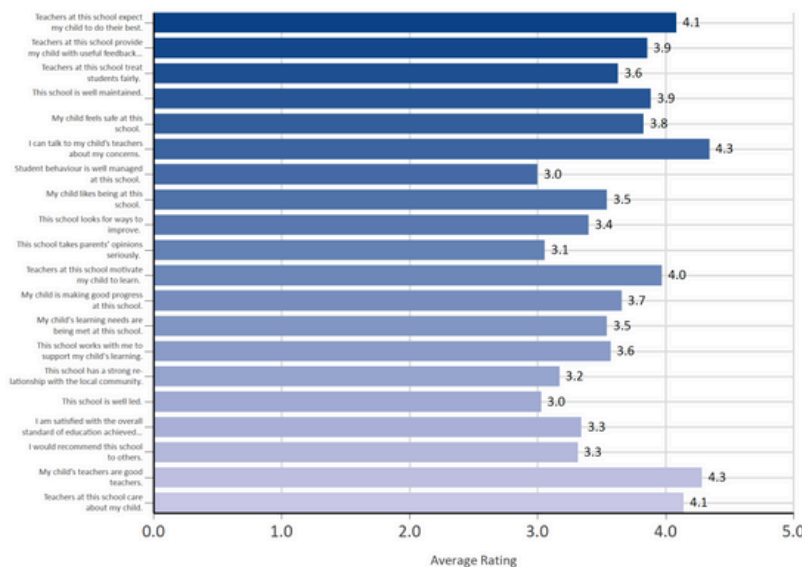
Parent Responses

Parent feedback indicated that parents felt the teachers were generally committed to their child's education with each of the areas related to teaching receiving an average rating of 3.6 or more. Parent ratings on teaching quality and care for their child ranged from 4.1 to 4.3.

Areas for improvement include working with our parents and communities to ensure that they feel valued and supported. Moving forward we will continue to seek parent feedback and to provide further opportunities for families to be more active within the school community, and provide opportunities for families to be involved in their child's educational experience.



Spread of year levels



Year 6 Leadership

At Mount Helena Primary School we encourage our Year 6 students to challenge themselves and explore opportunities that will build their resilience and leadership skills. As a part of this, all students in Year 6 have leadership roles and take on responsibilities throughout the year. In 2023, we had the following leadership positions;

- Student Councillors,
- Faction Captains,
- Environmental Advisors,
- Carnaby Wing Managers, and
- Assembly Technicians.

Our Year 6 students lead the school with pride, ensuring that they uphold the expectations and set a good example, being kind, courteous, polite and helping others. Some of the key roles they played included the introduction of Litter Legends, carrying out our sustainability processes, leading assemblies and helping out at Faction carnivals.

Year 6 Leadership Camp - Challenge by Choice

As a part of challenging themselves, Year 6 students attended a 3 day - 2 night camp at Ern Halliday Recreation Camp. During the camp, students are provided with challenges where they could set their own goals. Some of the activities included; rock climbing, track bike riding beach games, archery, and big swing.

Big swing was the favourite, by far! Along with these camp organised activities, the Year 6 students performed in their own Talent Quest. It was a wonderful camp that supported students to 'get outside their own comfort zone' within a safe space.



Future Directions 2024

Mount Helena Primary School future directions will be guided by The Department of education 'Every student, every classroom, every day, strategic directions for public schools 2020-2024', Building on Strength: Future Directions for the Western Australian public school system, and, Focus 2024. These documents will guide our direction, along with the recommendations outlined in our 2023 Public School Review.

Public School Review Recommendations

Relationships and Partnerships

- Seek opportunities to engage parents as genuine partners in their child's learning and to develop authentic community relationships.
- Continue the intent to establish a compliant School Council. Schedule sufficient meetings for the Council to satisfactorily complete its role in school governance.
- To further enhance understanding and accountability, develop and share a communication policy that identifies the expected mode and frequency of two-way school and parent communication.
- Provide clear and transparent responses to feedback provided through the parent National School Opinion Survey.

Learning environment

- Continue with the intention to establish an attendance and engagement team to support regular attendance.
- Implement with fidelity, a comprehensive, evidence-based, Tier 3 intervention program to support students at risk.

Leadership

- Engage staff and community in developing the new strategic plan. Develop a shared understanding of the school's vision and priorities. Set targets and strategies aligned to the vision and priorities. Ensure a clear alignment between the strategic and operational plans.
- Develop instructional leaders and formalise processes to provide professional learning and support to staff for the implementation of agreed pedagogical practices and whole-school programs, with a focus on consistency and low variance teaching.
- Ensure all staff participate in regular performance development maintaining a balance of accountability, support and feedback on performance.

Future Directions 2024

Resources

- Ensure that operational plans include the identification of intended resource costings creating a clear link between the strategic plan priorities, operational planning and the allocation of resources.
- Within workforce planning, allocate sufficient time for leaders to support the priorities of literacy and numeracy.

Teaching Quality

- Align the expectations of staff in pedagogical practice to the Department's Teaching for Impact ensuring consistency and connectedness of teaching practice through the development of a whole-school instructional model.
- Enhance instructional support for teachers through the implementation of an agreed process for observation and feedback as a driver of quality teaching.
- Ensure literacy and numeracy leaders have the support and resources to guide evidence-based, consistent practice with a view to improving student achievement and progress. • Continue a focus on developing consistency in the delivery of daily reviews across phases and learning areas of the school.

Student Achievement and Progress

- Continue with the intent for whole-school analysis of a greater range of systemic and school-based data to inform teaching practices.
- As planned, increase the number and range of valid, norm-referenced assessments including accessing Acadience Learning.

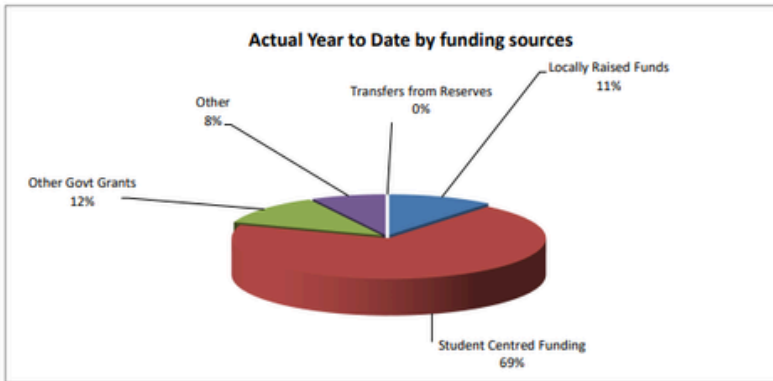
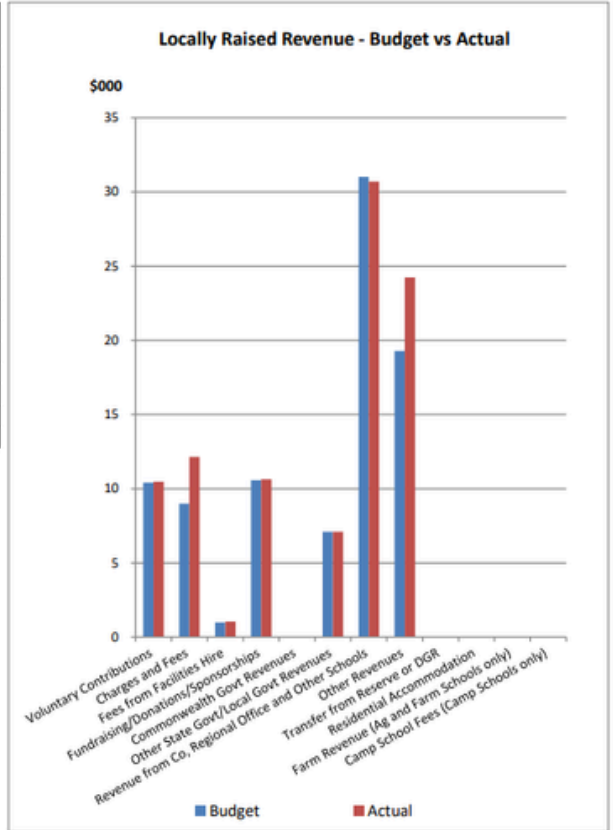


2023 Financial Summary

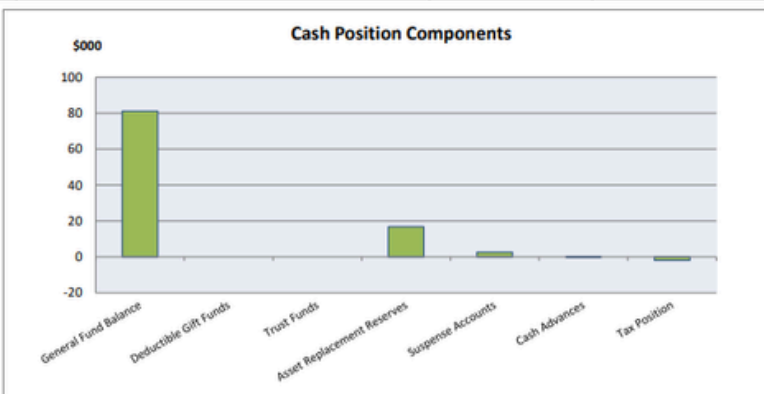
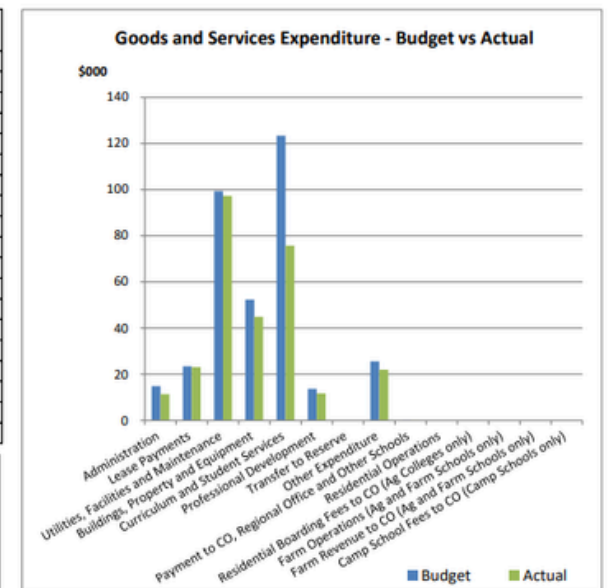
Mt Helena Primary School

Financial Summary as at 31/12/2023

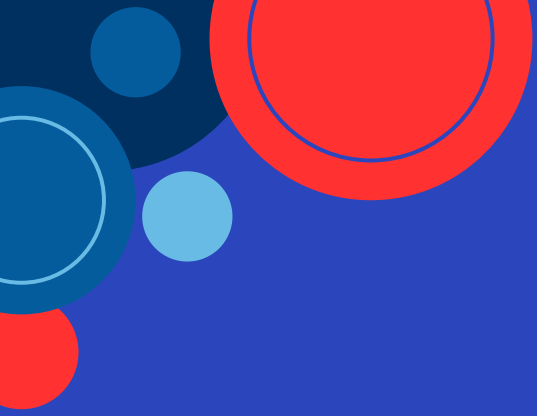
Revenue - Cash & Salary Allocation	Budget	Actual
1 Voluntary Contributions	\$ 10,408.00	\$ 10,468.00
2 Charges and Fees	\$ 8,997.00	\$ 12,147.25
3 Fees from Facilities Hire	\$ 993.00	\$ 1,048.31
4 Fundraising/Donations/Sponsorships	\$ 10,580.00	\$ 10,630.00
5 Commonwealth Govt Revenues	\$ -	\$ -
6 Other State Govt/Local Govt Revenues	\$ 7,093.00	\$ 7,093.55
7 Revenue from Co, Regional Office and Other Schools	\$ 31,018.00	\$ 30,693.26
8 Other Revenues	\$ 19,286.00	\$ 24,234.05
9 Transfer from Reserve or DGR	\$ -	\$ -
10 Residential Accommodation	\$ -	\$ -
11 Farm Revenue (Ag and Farm Schools only)	\$ -	\$ -
12 Camp School Fees (Camp Schools only)	\$ -	\$ -
Total Locally Raised Funds	\$ 88,375.00	\$ 96,314.42
Opening Balance	\$ 52,342.70	\$ 52,342.70
Student Centred Funding	\$ 218,508.00	\$ 218,507.67
Total Cash Funds Available	\$ 359,225.70	\$ 367,164.79
Total Salary Allocation	\$ -	\$ -
Total Funds Available	\$ 359,225.70	\$ 367,164.79



Expenditure - Cash and Salary	Budget	Actual
1 Administration	\$ 14,828.00	\$ 11,376.99
2 Lease Payments	\$ 23,420.00	\$ 23,036.99
3 Utilities, Facilities and Maintenance	\$ 99,340.00	\$ 97,278.82
4 Buildings, Property and Equipment	\$ 52,366.00	\$ 44,893.96
5 Curriculum and Student Services	\$ 123,346.00	\$ 75,712.08
6 Professional Development	\$ 13,694.00	\$ 11,698.66
7 Transfer to Reserve	\$ -	\$ -
8 Other Expenditure	\$ 25,579.00	\$ 21,983.49
9 Payment to CO, Regional Office and Other Schools	\$ 40.00	\$ 40.00
10 Residential Operations	\$ -	\$ -
11 Residential Boarding Fees to CO (Ag Colleges only)	\$ -	\$ -
12 Farm Operations (Ag and Farm Schools only)	\$ -	\$ -
13 Farm Revenue to CO (Ag and Farm Schools only)	\$ -	\$ -
14 Camp School Fees to CO (Camp Schools only)	\$ -	\$ -
Total Goods and Services Expenditure	\$ 352,613.00	\$ 286,020.99
Total Forecast Salary Expenditure	\$ -	\$ -
Total Expenditure	\$ 352,613.00	\$ 286,020.99
Cash Budget Variance	\$ 6,612.70	



Cash Position Components	
Bank Balance	\$ 98,594.21
Made up of:	
1 General Fund Balance	\$ 81,143.80
2 Deductible Gift Funds	\$ -
3 Trust Funds	\$ -
4 Asset Replacement Reserves	\$ 16,800.52
5 Suspense Accounts	\$ 2,641.89
6 Cash Advances	\$ (100.00)
7 Tax Position	\$ (1,892.00)
Total Bank Balance	\$ 98,594.21



www.mounthelenaps.wa.edu.au

